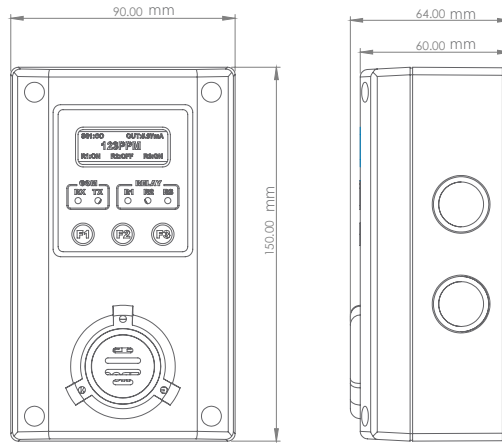



**CARBON MONOXIDE TOXIC GAS TRANSMITTER (CERTIFIED UL 2075)**

**Q5C SERIES**
**PRODUCT DESCRIPTION**

The Q5C series sensor/transmitters use electrochemical carbon monoxide sensors. Key features include:

- **NEMA 4X enclosure** with an integral buzzer.
- **LCD display** for gas concentration and LED indicators for relays and communications.
- **Pre-calibrated sensors** that can be user-installed to reduce costs and downtime.
- **Menu-selectable screens** displaying relay status, time, TWA, STEL, and concentration data.
- **Non-proprietary programming and calibration** accessed via a password.
- **Stand-alone or networked installation** with RS-485 or Modbus communication.
- **Analog outputs** (4-20 mA, 2-10 VDC, 1-5 VDC) that are fully assignable.
- **User-programmable relays and buzzer** for various activation options.
- **Duct mount , splash guard and flow through calibration cap kits** available

This series offers flexibility, ease of use, and cost efficiency for gas detection applications.

**SPECIFICATIONS**

VOLTAGE	24 VDC Nominal, range 18-30 VDC, 0.3 A DC Total Max 24 VAC Nominal, range 15-24 VAC, 0.3 A AC Total Max AC Power must not be grounded
FUSE	0.750A Polyswitch
SUPPLY CURRENT   POWER CONSUMPTION	0.3A maximum   8.4 VA
SENSING ELEMENT TECHNOLOGY	Electrochemical
SENSOR LIFE	Electrochemical: CO 5 years typical
ACCURACY	± 2.5% of reading
REPEATIBILITY	± 1% of reading
SHELF LIFE	Electrochemical (toxic) : 6 months from the date of purchase
RESPONSE TIME	Less than 30 seconds for 90% step change
COVERAGE AREA	(see table of gas)
MOUNTING HEIGHT	4' to 6' above the floor
FACTORY CALIBRATION RANGE	(see table of gas)
DISPLAY	Alphanumeric - 2 line x 8 Digits LCD
RELAYS OUTPUTS	Two Single pole double throw (SPDT) Form C 1 amp dry Contact CSA 1500 V FCC Part 68



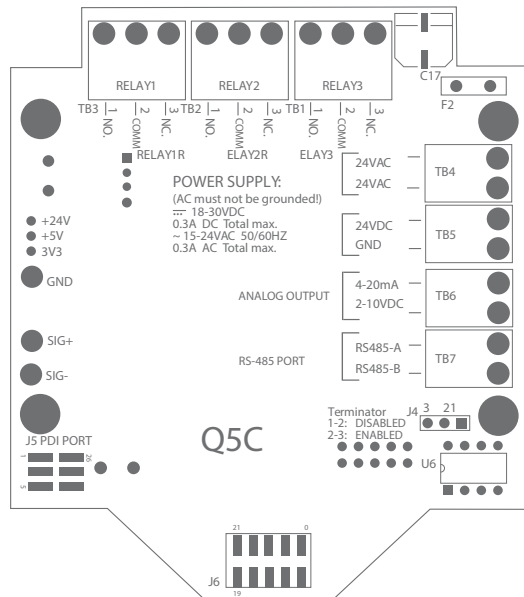
## SPECIFICATIONS

DISPLAY	LCD graphic display c/w backlight
PANEL CONTROL	Keypad: 3 Capacitive touch sensing keys: F1, F2, F3
PANEL INDICATOR	5 Status LED's RS-485 TX Status (Green) RS-485 RX Status (Green) Relay 1 Status (Red) Relay 2 Status (Red) Relay 3 Status (Red)
WARM UP TIME	1 hour
RELAYS OUTPUTS	3 Relays SPDT (Form C), dry contacts 1.0 A maximum at 30 VDC (resistive load) 0.3 A maximum at 125 VAC (resistive load)
TIME DELAYS	Actuation : 0 to 999 seconds De-actuation : 0-999 seconds
RELAYS LIFE EXPECTANCY	Mechanical : 50,000,000 Operations minimum @36000 operations/hours electrical : 200000 operations minimum @ rated load
ANALOG OUTPUTS	4-20mA , 2-10 VDC 1-5 VDC Analog Signal Output
DIGITAL OUTPUT	RS-485 Modbus RTU/OptoMux (Proprietary GES Controller Protocol) connects to Q4C Controller , M-Controller and Q-Controller
BAUD RATE	1200, 2400, 4800,9600, 14400, 19200, 28800, 38400, 57600, 76800 Bits/Second (Default: 4800 BPS)
BUZZER	80 db at 10 cm, 2700 Hz Buzzer with 3 programmable tones
OPERATING ENVIRONMENT	Indoor Use only
OPERATING TEMPERATURE	(see table of gas)
STORAGE TEMPERATURE	0deg C to +20deg C
OPERATING HUMIDITY	Constant : 15-90% RH Intermittent : 0-99% RH
STORAGE HUMIDITY	5% to 95% RH non condensing
OPERATING PRESSURE	Atmospheric +/-10%
ENCLOSURE	Plastic Enclosure ,Polycarbonate Lexan, Fire retardant UL94 V-0 IP 66 & NEMA 4, 4X, 12 & 13
WIRING	12 AWG to 24 AWG for Screw Terminals Blocks(De -Pluggable) , 16 AWG or 18 AWG wire for Power supply ( 1km max)
CABLE SPECIFICATION	BELDEN 9841 or equivalent ,120 ohms Input
DIMENSIONS	5.91" x 3.54" x 2.56"(150 mm x 90 mm x 65 mm)
WEIGHT	LESS THAN 0.5lbs

*Ensure a complete understanding of all applicable Federal, State, Provincial and Local Health and Safety laws and regulations before using these products.*



## WIRING INFORMATION



TERMINAL	FUNCTION
TB1 TB2 TB3	NC: Normally Close COM: Common NO: Normally Open 3 x Relays Outputs
TB4	24VAC Power IN VAC Full Wave
TB5	24VDC GND Power IN VDC Half Wave
TB6	4-20mA 2-10VDC Analog Output
TB7	A+ B- 1x RS-485 Port

## ORDERING

MODEL #	DESCRIPTION
B5C-CO-250P-O-X-G	BACnet MS/TP toxic combustable gas transmitter, carbon monoxide, 0-250PPM
B5C-CO-1000P-O-X-G	BACnet MS/TP toxic combustable gas transmitter, carbon monoxide, 0-1000PPM

## ACCESSORIES

## DESCRIPTION

## PART NUMBERS

ACCESSORIES	DESCRIPTION	PART NUMBERS
DUCT MOUNT	Mounting kit for duct installation	85930-040-000-G
SPLASH GUARD	Unit cover for wet application application	85930-001-000-G
CALIBRATION KIT	Kit for gas calibration ( please refers to manual)	85930-006-000-G