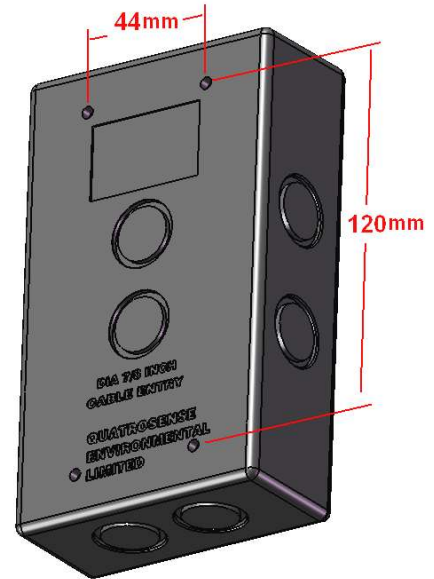


REVISIONS						
ECN	REV.	DESCRIPTION	DATE	DRAW	CHECK	APPROVED
1261	A	Initial Release	2024/10/24	XY	XY	XY



SPECIFICATION

INPUT POWER:
 +24VDC nominal, range: 18 to 30VDC 0.3A DC Total Max.
 ~24VAC nominal, range: 18 to 24VAC 50/60HZ 0.3A AC Total Max.

FUSE:
 F2 on Main Board: Polyswitch 750mA
 Polyswitch device resets after the fault is cleared and power to the circuit is removed

SENSOR:
 Combustible gases: Catalytic or NDIR
 Toxic gases and Oxygen: Electrochemical
 Carbon Dioxide: Non-Dispersive Infra-Red (NDIR) Electrochemical

OUTPUT SIGNAL:
 BACnet MS/TP master / slave protocol
 3X SPDT RELAYS: 1.0A MAX. @30VDC (RESISTIVE LOAD)
 0.3A MAX. @125VAC (RESISTIVE LOAD)

ENCLOSURE:
 IP 66 & NEMA 4, 4X, 12 & 13

OPERATING TEMPERATURE:
 -40°C to 50°C, depends on sensor specification

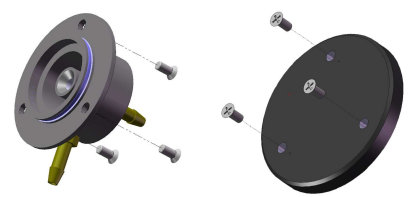
AMBIENT HUMIDITY:
 5% TO 95% RH (NON- CONDENSING)

STORAGE TEMPERATURE:
 0°C to 25°C, depends on sensor specification

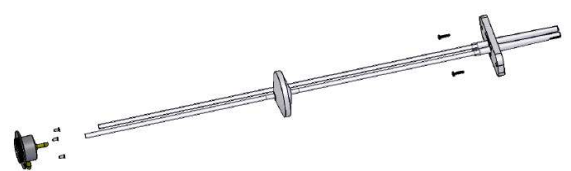
SIZE: 150mm X 90mm X 65mm

WEIGHT: LESS THAN 0.5lbs

Option Accessories: *Option Accessories are not included in Q5C or B5C Standard Package.



Pump-thru & Cal Cap Kit SKU#: 85930-006-005
Splash Guard Kit SKU#: 85930-007-005

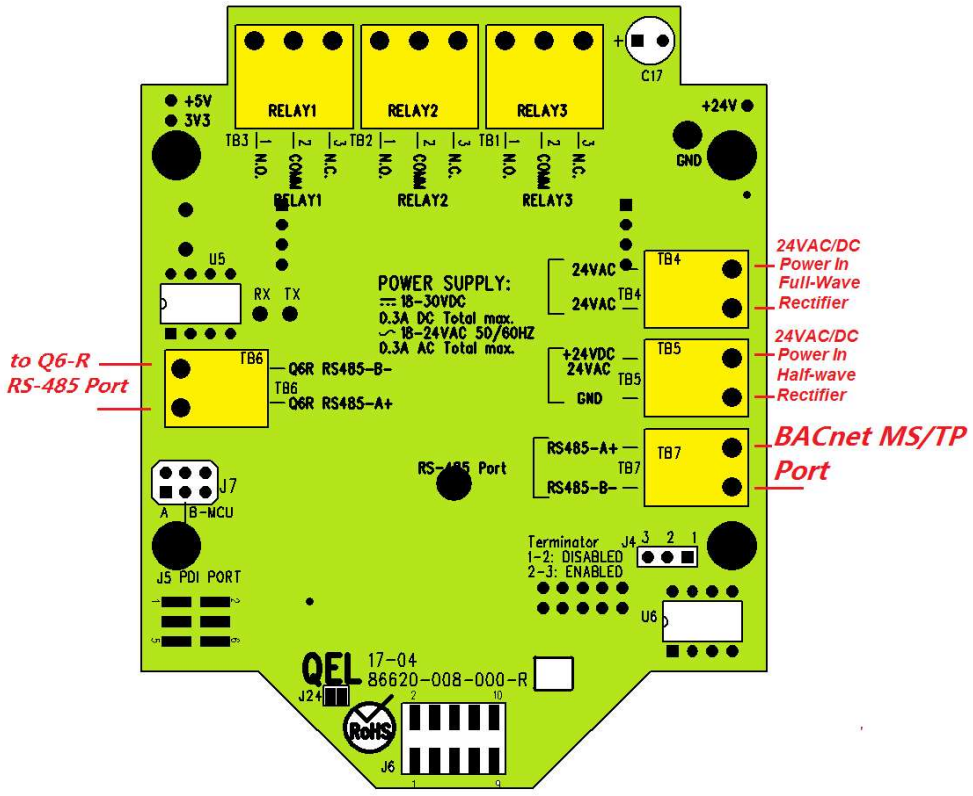


Duct Mount Adapter Kit: 85930-040-000

PROPRIETARY AND CONFIDENTIAL
 THE INFORMATION CONTAINED IN THIS DRAWING IS THE SOLE PROPERTY OF QuatroSense Environmental Ltd. ANY REPRODUCTION IN PART OR AS A WHOLE WITHOUT THE WRITTEN PERMISSION OF QuatroSense Environmental Ltd. IS PROHIBITED.

UNLESS OTHERWISE SPECIFIED:		NAME	DATE	Greystone Energy Systems Inc.
DIMENSIONS ARE IN INCHES		DRAWN	2024/10/24	
TOLERANCES:		CHECKED	2024/10/24	
FRACTIONAL: ± 1/32		ENG APPR.	2024/10/24	
ANGULAR: MACH ± .5 degrees BEND ± TWO PLACE DECIMAL ± .02 THREE PLACE DECIMAL ± .010		MFG APPR.		
INTERPRET GEOMETRIC TOLERANCING PER:		Q.A.		TITLE: B6, GES INSTALLATION DRAWING
MATERIAL		COMMENTS:		
NEXT ASSY	USED ON	FINISH		SIZE DWG. NO. REV B 86650-102-005 A
APPLICATION		DO NOT SCALE DRAWING		SCALE: 1:8 WEIGHT: SHEET 1 OF 3

REVISIONS				
ZONE	REV.	DESCRIPTION	DATE	APPROVED
-	-	See Sheet1	-	-



Twisted Pair?

RS-485 is designed to be a balanced system. The signal on one wire is ideally the exact opposite of the signal on the second wire. In other words, if one wire is transmitting a high, the other wire will be transmitting a low, and vice versa. Although RS-485 can be successfully transmitted using multiple types of media, it should be used with wiring commonly called "twisted pair."

Terminator Enable/Disable?

The terminator on each end of the RS485 loop is designed to match the electrical impedance characteristic of the twisted pair loop, and will prevent signal echoes from corrupting the data on the line. The terminator should be enabled on BOTH ends of the RS485 loop. Short and medium length modbus/485 loops can operate without the terminating resistor. Longer runs may require the terminating resistors. But adding terminator dramatically increases power consumption.

Sensor Location:

Several factors should be considered when selecting locations to install sensors. The following general suggestions should be considered to assure the detection of the target gas. Select the most suitable location for each sensor.

1. Air Currents: If there are fans, winds, or others sources of air movement, gases may tend to rise to collect in certain areas of a facility. The local air currents should be assessed to aid in selecting the sensor location. In outdoor situations considerations such as prevailing winds should be accounted for. Air convection can often be more important in determining gas concentrated areas than factors of Vapor Density.
2. Vapor Density: For the target gas heavier than air. Detecting location should be 9 - 18 inch (0.23m to 0.46m) above the floor.
3. Gas Emission Sources: As a rule, at least one sensor should be located in close proximity to each point where a leak is likely to occur. This is particularly important when a liquid having a low volatility is monitored.
4. Environmental Factors: Designed to rugged outdoor use consider the following in selecting locations. Install sensors where they will be protected from wind, dust, snow, water, vibration and shock.

Note:

- B6 supports BACnet MS/TP master or slave protocol
- B6 default baud rate is 38400bps
- Each B6 on the MS/TP network must have a unique BACnet MAC address and unique Device Instance Number (Object ID).
 - B6 valid MAC addresses are 0-127 for master node, 0-254 for slave node
 - B6 default MAC address is 126
 - Default Device Instance Number is 4005
- Avoid running communication wires or sensor input wires next to AC power wires or the relay output wires. These can be sources of noise that can affect signal quality.
- The B6M and Q6R both have full wave rectifier and half wave rectifier on board. You will damage devices if you mix half wave and full wave rectifiers on the same AC source. Use extreme caution when sharing a common AC source. Sharing a common DC source is less problematic.

PROPRIETARY AND CONFIDENTIAL
 THE INFORMATION CONTAINED IN THIS DRAWING IS THE SOLE PROPERTY OF <INSERT COMPANY NAME HERE>. ANY REPRODUCTION IN PART OR AS A WHOLE WITHOUT THE WRITTEN PERMISSION OF <INSERT COMPANY NAME HERE> IS PROHIBITED.

UNLESS OTHERWISE SPECIFIED:		NAME	DATE	Greystone Energy Systems Inc.
DIMENSIONS ARE IN INCHES		DRAWN	XY	
TOLERANCES:		CHECKED	XY	
FRACTIONAL: ±		ENG APPR.	XY 2017/12/12	
ANGULAR: MACH ± BEND ±		MFG APPR.		TITLE: B6, GES INSTALLATION DRAWING
TWO PLACE DECIMAL ±		Q.A.		
THREE PLACE DECIMAL ±		COMMENTS:		SIZE DWG. NO. REV
INTERPRET GEOMETRIC TOLERANCING PER:				B 86650-102-005 A
MATERIAL				SCALE: 1:2 SHEET 2 OF 3
FINISH				
NEXT ASSY	USED ON			
APPLICATION		DO NOT SCALE DRAWING		

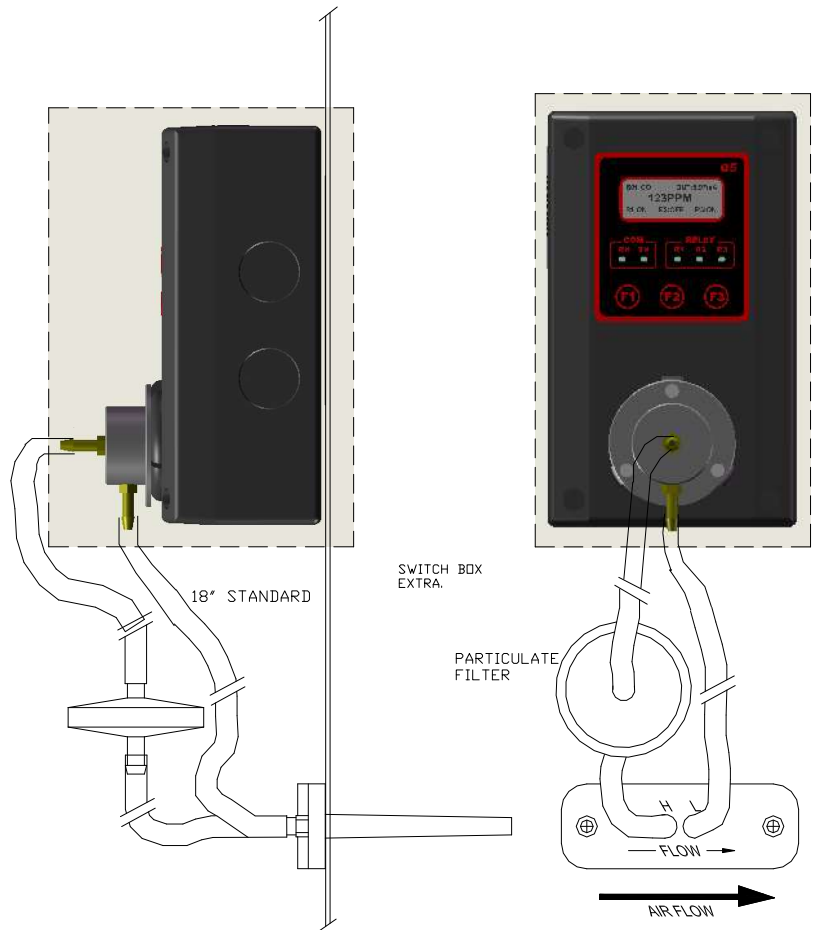
8 7 6 5 4 3 2 1

D

C

B

A



PROPRIETARY AND CONFIDENTIAL
 THE INFORMATION CONTAINED IN THIS DRAWING IS THE SOLE PROPERTY OF <INSERT COMPANY NAME HERE>. ANY REPRODUCTION IN PART OR AS A WHOLE WITHOUT THE WRITTEN PERMISSION OF <INSERT COMPANY NAME HERE> IS PROHIBITED.

		UNLESS OTHERWISE SPECIFIED:		NAME	DATE	Greystone Energy Systems Inc.	
		DIMENSIONS ARE IN INCHES		DRAWN	XY	TITLE: B6, GES INSTALLATION DRAWING	
		TOLERANCES:		CHECKED	XY		
		FRACTIONAL ±		ENG APPR.	XY		
		ANGULAR: MACH ± BEND ±		MFG APPR.			
		TWO PLACE DECIMAL ±		Q.A.	XY	SIZE DWG. NO. REV	
		THREE PLACE DECIMAL ±		COMMENTS:		B 86650-102-005 A	
		INTERPRET GEOMETRIC TOLERANCING PER:				SCALE: 1:2 WEIGHT: SHEET 3 OF 3	
		MATERIAL					
NEXT ASSY		USED ON					
APPLICATION		DO NOT SCALE DRAWING					

8 7 6 5 4 3 2 1