



GREYSTONE

ENERGY SYSTEMS INC

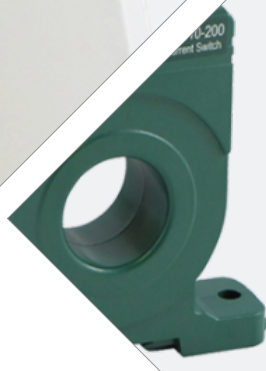
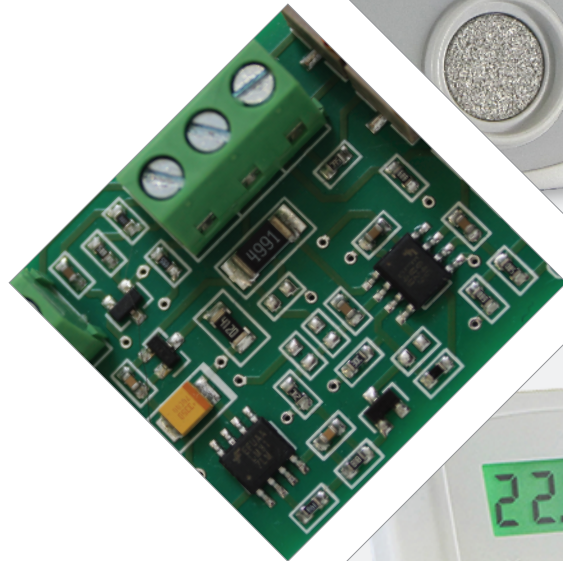
Accuracy by Design Products for the HVAC Professional

Greystone Energy Systems Inc., is one of North America's largest ISO registered manufacturers of HVAC sensors and transmitters for Building Automation Management Systems.

We have conscientiously established a worldwide reputation as an industry leader by maintaining leading-edge design technology, prompt technical support and committing to on-time deliveries. We take pride in our ISO 9001 certified Quality Management System, assuring Greystone customers of consistent product quality and reliability.

Greystone products include:

- Temperature Sensors
- Temperature Transmitters
- Humidity Transmitters
- Static Pressure Transmitters
- Differential Pressure Transmitters
- Gauge Pressure Transmitters
- Air Flow Transmitters
- Air Quality Monitor
- Particulate Matter Transmitters
- Carbon Monoxide Detectors
- Carbon Dioxide Detectors
- Current Switches & Sensors
- Analog to Pneumatic (I/P) Transducers
- Signal Conditioning Interface
- Power Supplies
- Water Detectors



RoHS
COMPLIANT

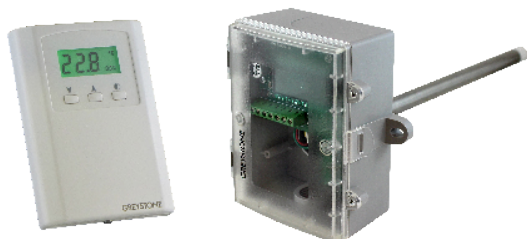


GREYSTONE HAS AN ISO 9001 REGISTERED QUALITY SYSTEM

BACnet® & Modbus

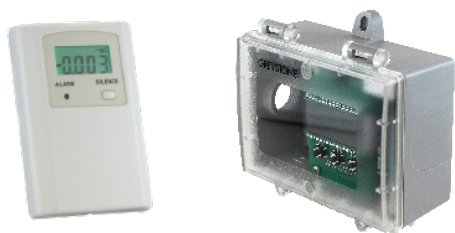
Network Sensors feature embedded BACnet® and Modbus communication and are available in several configurations for the most efficient monitoring and control solutions.

- Native BACnet® or Modbus MS/TP protocol
- Setup/calibration fully menu driven
- Powered by either an AC or DC source



TEMPERATURE / HUMIDITY & DEWPOINT

- Room, duct and outside air models
- Highly stable sensing elements
- Relay and alarm outputs
- LCD available on some models
- Selectable measurement variables (RH, dewpoint, dry-bulb, wet-bulb and enthalpy)



PRESSURE

- Precision silicon sensor
- Uni- or bi-directional pressure ranges
- Multiple pressure ranges for each (W.C. & Pa)
- Relay and alarm outputs
- BACnet® only



AIR & GAS

- Non-dispersive infrared sensor (CO₂)
- Room, duct and outside air (CO₂), space & duct (CO)
- Selectable ranges (CO₂) & (CO)
- Replaceable electrochemical sensing element (CO)
- Optional on-board relays with field adjustable trip point
- LCD available on some models



TEMPERATURE

Room, Duct, Immersion, Strap-On & Outside Air

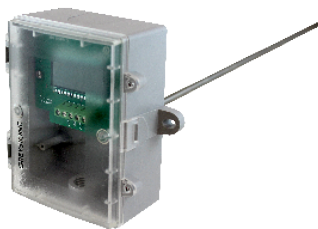
A comprehensive selection of temperature measuring products that are designed and manufactured for long-term stability and performance. Each product provides a repeatable and accurate output signal for efficient temperature monitoring and control.

- Sensors, transmitters and thermostats
- Various enclosure styles
- Multiple configurations available



SENSORS

- Precision thermistor or RTD sensing elements
- Setpoint adjustment, up/down pushbuttons
- Optional override switch, fan speed switch and communications jack



TRANSMITTERS

- Precision RTD sensing element
- High accuracy transmitter
- Choice of scaled ranges
- LCD available on some models
- 3 available output signals



THERMOSTATS

- High and low limit thermostats
- Precision thermistor sensing element
- Multiple configurations available
- Selection of enclosures
- Relay output with adjustable setpoint



HUMIDITY & DEWPOINT

HUMIDITY



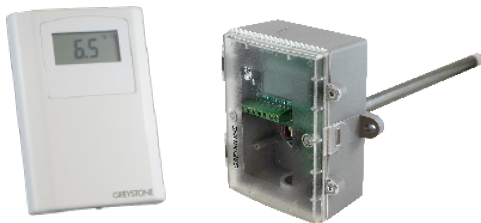
- Precision RH and temperature sensing elements
- Room, duct and outside air models
- Humidity range: 0 to 100%
- Accuracies available: 2%, 3% & 5%
- Choice of precision temperature sensors
- LCD available on some models
- Field selectable outputs

HUMIDITY / TEMPERATURE

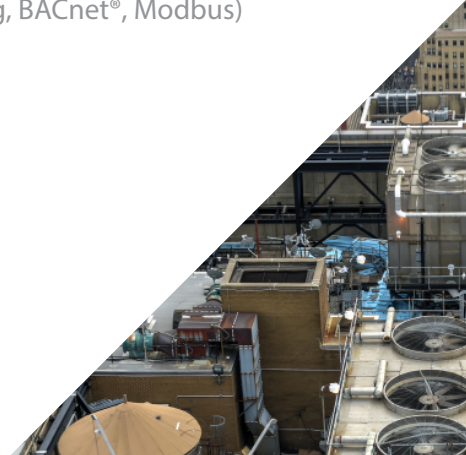


- Precision RH and temperature sensing elements
- Humidity range: 0 to 100%
- Accuracies available: 2%, 3% & 5%
- Choice of multiple temperature ranges
- Options such as override, fanspeed switch and communications jack (Room only)
- LCD available on some models

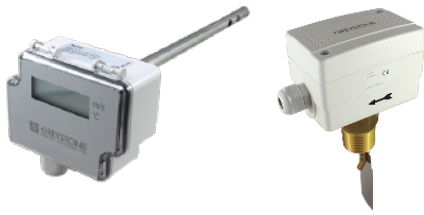
DEWPOINT



- Precision RH and temperature sensing elements
- Room, duct and outside air models
- 4 user selectable measurement variables (Dewpoint, dry-bulb, wet-bulb and enthalpy)
- 3 output types available (Analog, BACnet®, Modbus)
- Dual analog outputs
- LCD available on some models



FLOW



AIRFLOW TRANSMITTER/LIQUID FLOW SWITCH

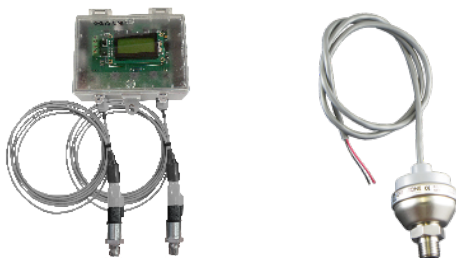
- Duct air velocity into a 4–20 mA/0–10 Vdc signal
- Telescopic probe facilitates various duct sizes
- LCD Display
- Liquid paddle flow switch
- Adjustable S/S paddle for 1" to 8" pipes
- Contact closure to prove liquid flow

PRESSURE



LOW PRESSURE

- Several monitoring configurations
- Ranges 0.125" W.C. to 20" W.C. (30 to 5000 Pa)
- Uni- or bi-directional pressure ranges
- Selectable pressure ranges for each (W.C. & Pa)
- Available options include LCD display and relay output
- Optional BACnet® communications



HIGH PRESSURE

- Gage & differential models
- Stainless steel sensor construction
- Models with selectable pressure ranges
- Remote & built-in sensor models available
- Large variety of ranges





AIR & LIQUID PRESSURE SWITCHES

- High rated SPDT contacts
- Adjustable setpoint
- Adjustable differential
- Full mechanical switching
- Liquid gauge or differential

SIGNAL INTERFACES



TRANSMITTERS

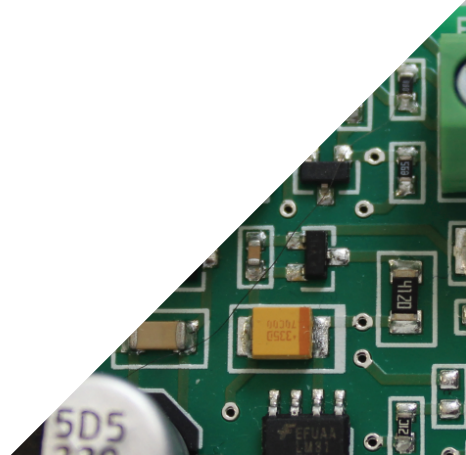
- Analog to pneumatic
- Analog rescaling
- Analog signal isolation
- Analog to resistance
- Analog to multiple relay

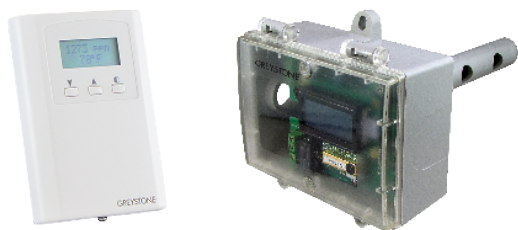
AIR & GAS



CARBON MONOXIDE & NITROGEN DIOXIDE

- Replaceable electrochemical sensing element
- Ranges up to 500 PPM (CO)
- Ranges up to 10 PPM (NO₂)
- Optional on board relay
- Optional BACnet® or Modbus communication





CARBON DIOXIDE

- Room, duct or outside air models
- 0-2000 or 20,000 (dual-channel) PPM CO₂ ranges
- Guaranteed 5 year calibration interval
- Models with temperature & RH
- Optional BACnet® or Modbus communication



VOC

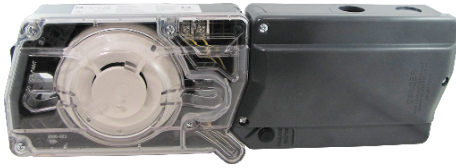
- Room, Duct or Outside models
- 0 to 2000 ppm CO₂ equivalent output signal
- LCD to display air quality information (Room Only)
- Analog stepped output for damper control
- Linear output for logging and control
- Tri-color LED to indicate IAQ level (Room Only)
- Optional resistive temperature sensors



PARTICULATE MATTER

- Detection of environmental dusts and other particles
- Room, Duct and Outside Models
- Laser scatter method sensor
- Particulate Sizes: PM_{1.0}, PM_{2.5}, PM_{4.0} & PM₁₀ (selectable)
- Analog, BACnet® or Modbus





SMOKE DETECTORS

- 24 Vac/dc or 120/240 Vac operation
- Simple change-out of photoelectric sensing head
- Low flow air velocity rating from 100 to 4000 FPM
- UL, CSFM and MEA Listed
- Easy and quick mounting to round or rectangular ducts
- Built-in reset switch that is also an alarm test switch

POWER



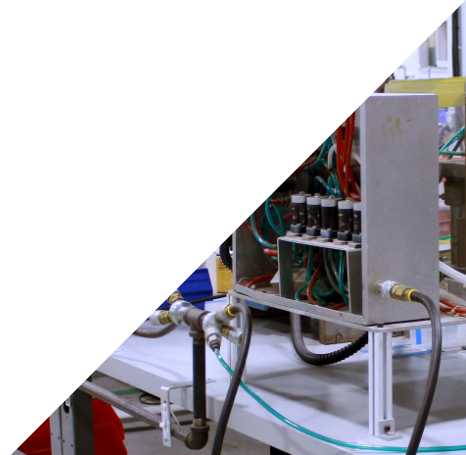
CURRENT SWITCHES

- Solid or split-core
- Auto-ranging eliminates lost jumpers
- Self-powered and no insertion loss
- True digital switching with zero leakage
- Small compact size
- Fixed or field adjustable models
- Input / Output isolation via current transformer



CURRENT SENSORS

- Solid or split-core
- No field adjustment necessary, factory calibrated
- 0-5 Vdc, 0-10 Vdc or 4-20 mA models
- Average measurement or True RMS
- Input / Output isolation via current transformer
- Small compact size



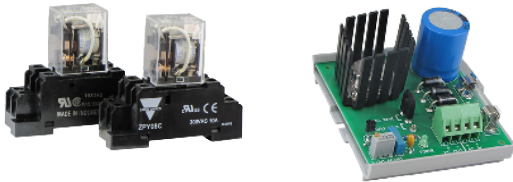
WATER DETECTION



WATER DETECTOR

- Single-point or conductivity cable
- Gold-plated sensing probes
- Monitors variety of liquids
- Fail-safe circuitry
- Form C, relay output
- Weatherproof enclosure

MISCELLANEOUS



VARIOUS PRODUCTS

- Regulated DC power supplies
- General purpose relays
- Damper-end switch
- Light level detector
- Remote LCD display



INTERNATIONAL GREYSTONE



Head Office & Manufacturing

Moncton, New Brunswick, Canada

North America Sales Offices

Toronto, Ontario, Canada

Calgary, Alberta, Canada

Sherwood, Oregon, US

Avon, Indiana, US

International Sales Offices

Bangalore, India

New Delhi, India

Mumbai, India

Dubai, United Arabs Emirates

Peninsula Plaza, Singapore

Kuala Lumpur, Malaysia

Greystone Energy Systems Inc.

150 English Drive, Moncton
New Brunswick, Canada E1E 4G7
Phone : +1-506-853-3057
Fax : +1-506-853-6014
North America: +1-800-561-5611

mail@greystoneenergy.com

www.greystoneenergy.com



RoHS
COMPLIANT



GREYSTONE HAS AN ISO 9001 REGISTERED QUALITY SYSTEM