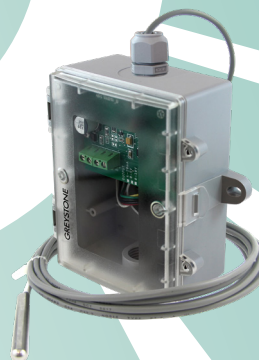




The flying lead low limit thermostat incorporates a precision thermistor temperature sensor and provides a Form C relay output (NO/NC) with an adjustable setpoint. The sensor is encapsulated in a 6 mm (0.236") OD X 50 mm (2"), 304 series stainless steel probe. Standard wire length is 3.05m (10'). All probes are constructed to provide excellent heat transfer, fast response and are potted to resist moisture penetration. A weatherproof Polycarbonate enclosure is included for ease of installation.



### SPECIFICATIONS:

- Power Supply:.....12 to 28 Vac/dc
- Consumption:.....50 mA max
- Relay Contacts:.....SPDT, Form C contacts (N.O. and N.C.)  
5 Amps @ 30 Vac/250 Vac resistive  
1.5 Amps @ 30 Vdc/250 Vac inductive
- Relay Action:.....Activates on temperature fall
- Setpoint Operation:.....Single-turn knob-pot on PCB
- Adjustable Setpoint:.....-4 to 10°C (25 to 50°F)
- Setpoint Temperature:.....Low/Mid/High jumper selectable  
Differential 1.1, 2.8, 5.6°C (2, 5, 10°F)
- Temperature Sensor:.....10K ohm curve matched precision thermistor
- Sensor Accuracy:.....±0.2°C, 0 to 70°C (±0.36°F, 32 to 158°F)
- Probe Sensing Range:.....-20 to 60°C (-4 to 140°F)
- Probe Material:.....304 Series Stainless Steel
- Probe Diameter:.....6 mm (0.236")
- Wire Material:.....FT-6 Plenum-rated cable
- Wire Length:.....3.05m (10')
- Operating Conditions:.....-10 to 50°C (14 to 122°F), 5 to 95% RH, non-condensing
- Storage Conditions:.....-30 to 70°C (-22 to 158°F), 5 to 95% RH, non-condensing
- Wiring Connections:.....Screw terminal block (14 to 22 AWG)
- Enclosure:.....Grey Polycarbonate UL94-V0, IP65 (NEMA 4X)  
F style includes thread adapter (1/2" NPT to M16)  
and cable gland fitting
- Country of Origin:.....Canada

### PART NUMBER SELECTED

### PRODUCT SELECTION INFORMATION:

MODEL	Product Description
TLFL	Flying Lead Low Limit Thermostat

CODE	Enclosure
B	Polycarbonate, with hinged & gasketed cover
F	Same as B, with thread adapter & cable gland

CODE	Sensor
24X	10,000 Ω, Type 2, NTC Thermistor, ±0.2°C

CODE	Adjustable Setpoint Range
01	-4 to 10°C (25 to 50°F)

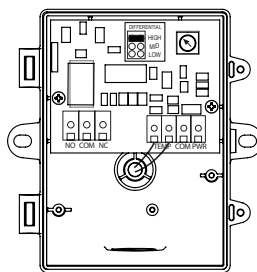
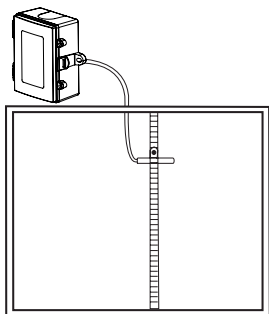
Greystone Energy Systems, Inc. reserves the right to make design modifications without prior notice.

### TYPICAL INSTALLATION:

For complete installation and wiring details, please refer to the product installation instructions.

A typical application for the flying lead type probes is to monitor a single point temperature within the duct. Install the probe in a straight section of duct at a suitable distance downstream from any heating, cooling or humidification devices. Drill a 3/8 hole in the top of the duct and hang the sensor in the air stream.

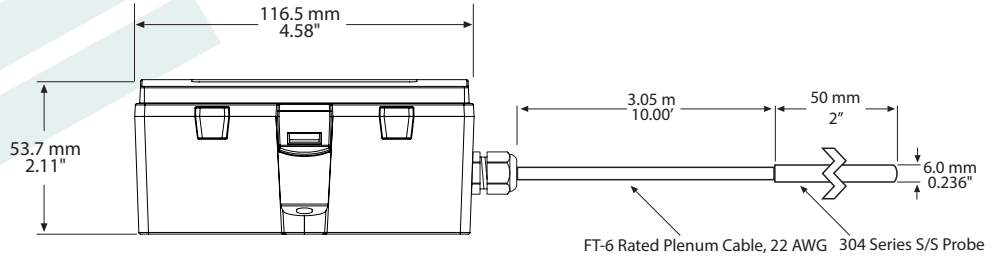
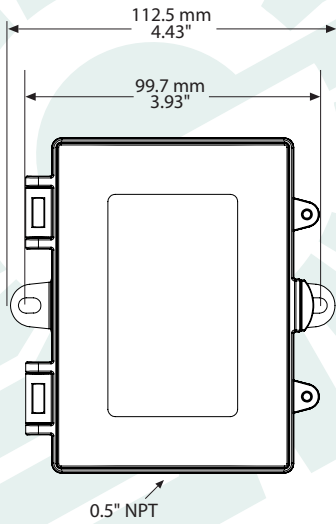
The enclosure provides mounting tabs for ease of installation.



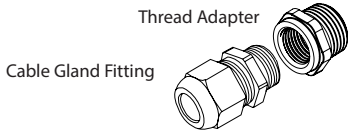
### Wiring:

<b>Terminal</b>	<b>Function</b>
PWR	Power Supply
COM	Power Supply Common
TEMP (2)	Temperature Sensor Input
NO	Relay Output - Normally Open Contact
COM	Relay Common
NC	Relay Output - Normally Closed Contact

**DIMENSIONS:**





Included with F style enclosure




**GREYSTONE**  
**ENERGY SYSTEMS INC**  
 Greystone Energy Systems, Inc.  
 150 English Drive, Moncton,  
 New Brunswick, Canada E1E 4G7  
 (506) 853-3057 Fax: (506) 853-6014  
 North America: 1-800-561-5611  
 e-mail: mail@greystoneenergy.com  
 www.greystoneenergy.com

**RoHS**  
 COMPLIANT





*Greystone Energy Systems Inc. is one of North America's largest ISO registered manufacturers of HVAC/R sensors and transmitters for Building Automation Management Systems. We have conscientiously established a worldwide reputation as an industry leader by maintaining leading-edge design technology, prompt technical support, and a commitment to on-time deliveries. We take pride in our Quality Management System which is ISO 9001 certified, assuring our customers of consistent product reliability.*

GREYSTONE HAS AN **ISO 9001** REGISTERED QUALITY SYSTEM