



# GREYSTONE ENERGY SYSTEMS INC

## DIFFERENTIAL PRESSURE SWITCH GFS Series

The differential pressure switch housing unit contains a diaphragm, a snap-acting SPDT switch, and a range adjustment knob with increments. The sample connections located on the side accept 6.35mm (0.25") OD tubing. There are 3 pressure ranges available. 2 pick up tubes and 2m (6.56') of PVC tubing are included. The enclosure cover guards against accidental contact with the live switch terminal screws and the setpoint adjustment knob with indication.



### SPECIFICATIONS:

Adjustment Range.....See product ordering information  
 Adjustment Knob Markings.....Scaled in Pascal and "WC  
 Switch Tolerance.....±15%  
 Maximum Operating Pressure.....1.45 PSI (10 kPa) for all pressure ranges  
 Medium.....Air, non-combustible, and non-aggressive gases  
 Temperature Range.....Medium and ambient temperature:  
 -20 to 60°C (-4 to 140°F)  
 Storage Temperature:  
 -40 to 85°C (-40 to 185°F)  
 Diaphragm Material.....Silicone, tempered at 200°C, free of gas emissions  
 Pressure Connections.....2 plastic pipe connections pieces  
 (P1 and P2), external diameter 6.0mm  
 P1 for connection to higher pressure  
 P2 for connection to lower pressure  
 Electrical Rating.....Max. 1.0A (0.4A) / 250 Vac, 50/60 Hz  
 Max. 0.1A / 24 Vdc  
 Electrical Connections.....AMP flat plug 6.3mm x 0.8mm  
 Push-on screw terminals  
 Cable conduit with cable relief  
 Mechanical Working Life.....Over 10 million switching operations  
 Housing Materials.....Switch body made of PA 6.6  
 Cover made of PC  
 Protection Category.....IP54 with cover (NEMA 13)  
 Weight.....With cover 160g  
 Included Accessories.....2 meters of PVC hose and 2 plastic tubes  
 Set of 3 push-on screw terminals  
 Approvals.....CE  
 ETL Approves, No. 3192203  
 UL508 & CSA 22.2

### PART NUMBER SELECTED

### PRODUCT SELECTION INFORMATION:

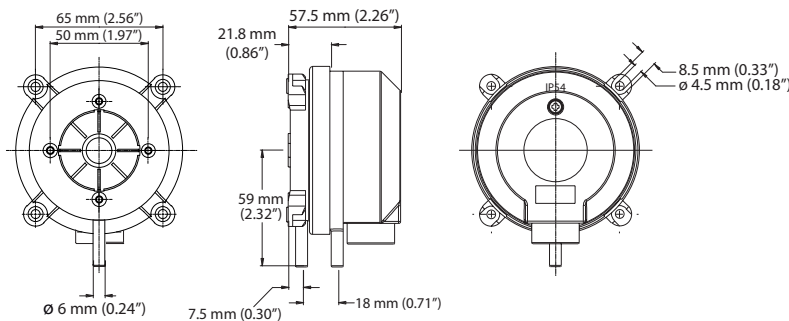
MODEL	Product Description
GFS	Adjustable Airflow Switch with Setpoint Indication

CODE	Range
80U	0.08" to 1.20" w.c. (20 to 300 Pa), Switch differential 0.04" w.c. (10 Pa)
83U	0.2" to 2.00" w.c. (50 to 500 Pa), Switch differential 0.08" w.c. (20 Pa)
86U	2.00" to 10.00" w.c. (500 to 2500 Pa), Switch differential 0.60" w.c. (150 Pa)

CODE	Electrical Connections
NPIKG	1/2" NPT & duct install kit
M2IKG	M20 & duct install kit
CNIKG	Cap Nut & duct install kit

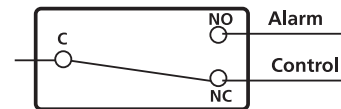
Greystone Energy Systems, Inc. reserves the right to make design modifications without prior notice.

### DIMENSIONS:

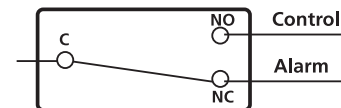


### ALARM OR CONTROL:

To prove excessive airflow or pressure



To prove insufficient airflow or pressure



Greystone Energy Systems, Inc.  
 150 English Drive, Moncton, NB  
 Canada E1E 4G7

(506)853-3057 Fax: (506)853-6014  
 North America: 1-800-561-5611  
 e-mail: mail@greystoneenergy.com  
 www.greystoneenergy.com

RoHS COMPLIANT

