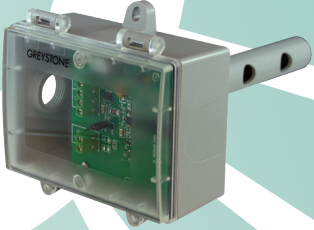


The CO2 sensor series uses a highly accurate and reliable non-dispersive infrared (NDIR) sensor in a duct mount enclosure to monitor return air CO2 levels for indoor applications. The compact dual wavelength CO2 sensor achieves excellent performance characteristics, including high accuracy and low power consumption to ensure stable long term operation. The CO2 sensor features user selectable 4-20 mA or 0-5 Vdc or 0-10 Vdc for simple integration into any building automation system. A weatherproof, polycarbonate enclosure with an air sampling probe is provided for electrical connections.



SPECIFICATIONS:

CO2 Sensor..... Dual wavelength non-dispersive infrared (NDIR)
 Range..... 0-2000 ppm
 Accuracy..... ± 50 ppm + 3% of reading
 Pressure Dependency < 1% of reading / kPa
 Response Time 2 minutes (T90)
 Warm-up Time..... 1 minute
 Sensor Life Span > 10 years
 Power Supply..... 24 Vac/dc ± 20% (non-isolated half-wave rectified)
 Consumption..... 80 mA max @ Vdc, 160 mA max @ 24 Vac
 Protection Circuitry Reverse voltage and transient protected
 Output Signals..... 4-20 mA, 0-5 Vdc, 0-10 Vdc (field selectable)
 Drive Capability **Current:** 600 Ω max @ 24 Vdc
 Voltage: 10K Ω min
 Operating Conditions..... -10 to 50°C (14 to 122°F), 0-90 %RH non-condensing
 Storage Conditions -30 to 70°C (-22 to 158°F), 0-85%RH non-condensing
 Wiring Conditions..... Screw terminal block (14-22 AWG)
 Enclosure..... Polycarbonate, UL94-V0, IP65 (NEMA 4X)
 F style includes thread adapter (1/2" NPT to M16)
 and cable gland fitting
 Probe Dimensions..... 152 mm L x 21.5 mm Diameter (6" x 0.88")
 Optional Temperature Sensor Various RTDs or thermistors as a 2-wire resistance output
 Approvals..... CE, RoHS
 Country of Origin Canada

PART NUMBER SELECTED

PRODUCT SELECTION INFORMATION:

MODEL	Product Description
CEDT	Duct Carbon Dioxide Sensor
ENCLOSURE	
CODE	Enclosure
B	Polycarbonate, with hinged & gasketed cover
F	Same as B, with thread adapter & cable gland fitting
SENSOR	
CODE	Sensor
00	No Temperature Selected
02	100 Ω Platinum RTD
05	1801 Ω Thermistor
06	3000 Ω Thermistor
07	10,000 Ω Thermistor, Type 3
08	2.252K Ω Thermistor
12	1000 Ω Platinum RTD
13	1000 Ω Nickel RTD
14	10,000 Ω Thermistor, Type 3 with 11K Shunt
20	20,000 Ω Thermistor
24	10,000 Ω Thermistor, Type 2

Greystone Energy Systems, Inc. reserves the right to make design modifications without prior notice.

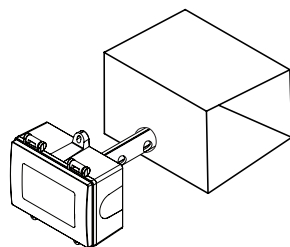
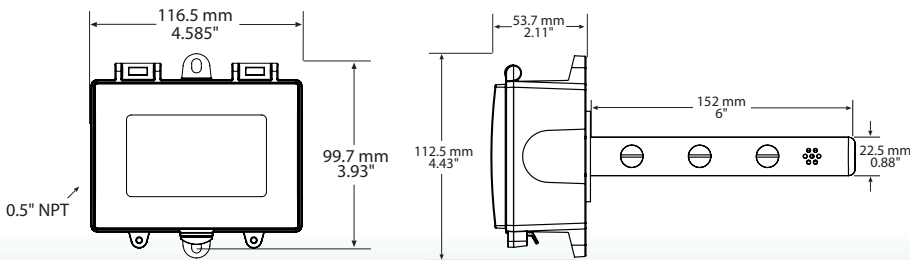
TYPICAL INSTALLATION:

For complete installation and wiring details, please refer to the product installation instructions.

The duct type probes are installed through a hole in the side of the duct to monitor a single point temperature within the duct. Since the probes are tip sensitive, select a probe length that places the sensor well into the duct. Install the probe in a straight section of duct at a suitable distance downstream from any heating, cooling or humidification devices.

The enclosure provides mounting tabs for ease of installation.

DIMENSIONS:



Included with F style enclosure

Thread Adapter

Cable Gland Fitting

