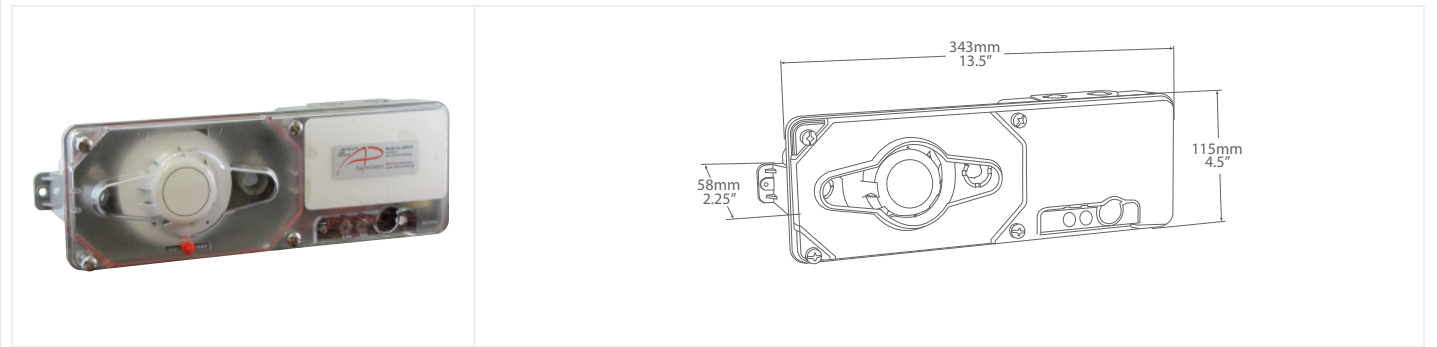




DUCT SMOKE DETECTOR



SL2000 SERIES

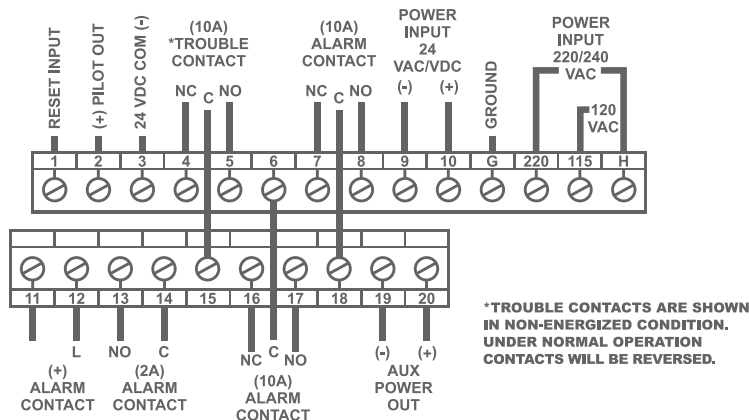
PRODUCT DESCRIPTION

The SL-2000 Series Smoke Detector is the latest innovation for early detection of smoke and products of combustion present in air moving through HVAC ducts in Commercial, Industrial and Residential application. The SL-2000 Series, 4-wire duct housing incorporates a photoelectric sensor. The interchangeable detector heads allow easy removal for quick cleaning and maintenance, or a change in application without removing the duct housing. The SL-2000 samples air currents passing through a duct and gives dependable performance for management of fans, blowers, and air conditioning systems.

SPECIFICATIONS - SL-2000-P

POWER REQUIREMENTS (WITHOUT ACCESSORIES)	Stand By: 230 VAC-12 mA 115 VAC-22 mA 24 VAC-55 mA 24 VDC-68 mA	Alarm: 230 VAC-18 mA 115 VAC-32 mA 24 VAC-190 mA 24 VAC-68 mA
RELAY CONTACT RATING	Alarm Contacts: 2 sets form "C" rated at 10 amps @ 115 VAC resistive 1 set form "A" rated at 2 amps Trouble Contacts: 1 set form "C" rated at 10 amps @ 115 VAC resistive	
AIR VELOCITY	0.50 to 10 m/s (100 to 4000 FPM)	
AMBIENT TEMPERATURE	0 to 60°C (32 to 140°F)	
HUMIDITY	85 ±5 % RH (@ 32 ±2°C; 86 ±3.6°F) non-condensing / non-freezing	
WIRING	12 to 22 AWG	
APPROVALS	UL & CUL Listed: (UL268A, UROX, UROX7) File #S2829 CSFM Listed: (3240-1004:105) MEA Accepted: (73-92-E;VOL.27)	
MATERIAL	Grey plastic backbox, clear plastic cover, (Makrolon 94V-0)	
DIMENSIONS	343 mm L x 115 mm H x 58 mm D (13.5"x 4.5"x 2.25")	
MAX. NET WT.	1.14 Kg (2.5lbs)	
COUNTRY OF MANUFACTURE	U.S.A.	

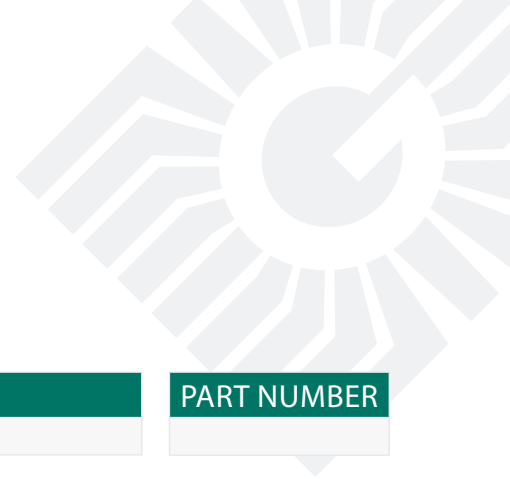
WIRING INFORMATION



NOTE: Output terminals are provided for remote accessories such as horns, strobes, remote status indicators and test/reset key switches or push buttons.

The SL-2000 includes many features that represent true innovations from current generation duct smoke detectors. It is designed and built to meet all local requirements, as well as the NFPA regarding duct smoke detectors.

All detectors must be used with a metal sampling tube, model STN series.



ORDERING

PRODUCT

SL-2000-P 4-wire photoelectric duct detector

NOTE: Greystone Energy Systems, Inc. reserves the right to make design modifications without prior notice.

PART NUMBER

ACCESSORIES

SAMPLING TUBE

FAST Tube
STN-1.0
STN-2.5
STN-5.0
STN-10.0

Sectional sampling tube, kit fits up to 228.6mm (90") duct width
Metal sampling tube, duct widths up to 12"
Metal sampling tube, duct widths 6" - 2.5'
Metal sampling tube, duct widths 2.5' - 5'
Metal sampling tube, duct widths 5' - 10'

REMOTE ALARM

MS-RA/R
MS-KA/R
MS/RH/KA/P/R

Remote alarm LED (red) and push-button test/reset switch
Remote alarm LED (red) and key-operated test/reset switch
Remote alarm horn, alarm (red), pilot LED (green) and key-operated test/reset switch

NOTE: Greystone Energy Systems, Inc. reserves the right to make design modifications without prior notice.

PART NUMBER



Air Products and Controls
is a Brand of Apollo America
25 Corporate Drive
Auburn Hills, MI 48326
Phone: (248) 332-3900
Email: info@ap-c.com

The SL2000 series is manufactured by Air Products and Control Inc. and distributed by Greystone Energy Systems Inc. All installation documents and product markings will bare the Air Products and Control, Inc. name and logo.



Greystone Energy Systems, Inc.
150 English Drive, Moncton,
New Brunswick, Canada E1E 4G7

Ph: +1 (506) 853-3057 Fax: +1 (506) 853-6014
North America: 1-800-561-5611
E-mail: mail@greystoneenergy.com