



GREYSTONE

ENERGY SYSTEMS INC

Accuracy by Design Products for the HVAC Professional

Greystone Energy Systems Inc., is one of North America's largest ISO registered manufacturers of HVAC sensors and transducers for Building Automation Management Systems.

We have conscientiously established a worldwide reputation as an industry leader by maintaining leading-edge design technology, prompt technical support and committing to on-time deliveries. We take pride in our ISO 9001 certified Quality Management System, assuring Greystone customers of consistent product quality and reliability.

Greystone products include:

- Temperature Sensors
- Temperature Transmitters
- Humidity Transmitters
- Static Pressure Transmitters
- Differential Pressure Transmitters
- Gauge Pressure Transmitters
- Air Flow Transmitters
- Air Quality Monitor
- Carbon Monoxide Detectors
- Carbon Dioxide Detectors
- Nitrogen Dioxide Detectors
- Current Switches & Sensors
- Analog to Pneumatic (I/P) Transducers
- Signal Interfaces
- Power Supplies
- Water Detectors



RoHS
COMPLIANT

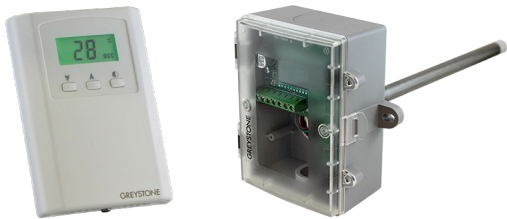


GREYSTONE HAS AN ISO 9001 REGISTERED QUALITY SYSTEM

BACnet® & Modbus

Network Sensors feature embedded BACnet® or Modbus communication and are available in several configurations for the most efficient monitoring and control solutions.

- Native BACnet® or Modbus MS/TP protocol
- Setup/calibration fully menu driven
- Powered by either an AC or DC source



TEMPERATURE / HUMIDITY & DEWPOINT

- Room, duct and outside air models
- Highly stable sensing elements
- Relay and alarm outputs
- LCD available on some models
- Selectable measurement variables (RH, dewpoint, dry-bulb, wet-bulb and enthalpy)



PRESSURE

- Precision silicon sensor
- Uni- or bi-directional pressure ranges
- Multiple pressure ranges for each (W.C. & Pa)
- Relay and alarm outputs
- BACnet® only



AIR QUALITY & GAS DETECTION

- CO₂, PM, VOC or CO/NO₂
- Room, duct and outside models
- Selectable ranges
- Replaceable sensing elements
- Optional alarm relays
- Optional audible & visual alarms



TEMPERATURE

Room, Duct, Immersion, Strap-On & Outside Air

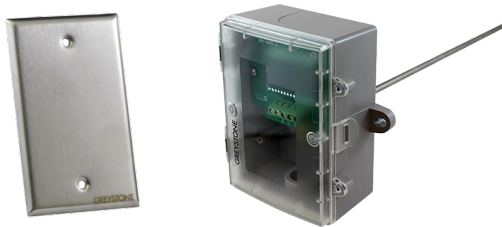
A comprehensive selection of temperature measuring products that are designed and manufactured for long-term stability and performance. Each product provides a repeatable and accurate output signal for efficient temperature monitoring and control.

- Sensors, transmitters and thermostats
- Various enclosure styles
- Multiple configurations available



SENSORS

- Precision thermistor or RTD sensing elements
- Setpoint adjustment, up/down pushbuttons
- Optional override switch, fan speed switch and communications jack



TRANSMITTERS

- Precision RTD sensing element
- High accuracy transmitter
- Choice of scaled ranges
- LCD available on some models
- 3 available output signals



THERMOSTATS

- High and low limit thermostats
- Precision thermistor sensing element
- Multiple configurations available
- Relay output with adjustable setpoint



HUMIDITY & DEWPOINT



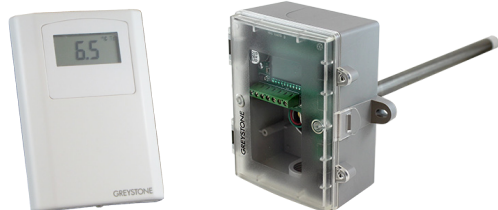
HUMIDITY

- Precision RH and temperature sensing elements
- Humidity range: 0 to 100%
- Accuracies available: 2%, 3% & 5%
- Choice of precision temperature sensors
- Field selectable outputs



HUMIDITY / TEMPERATURE

- Precision RH and temperature sensing elements
- Humidity range: 0 to 100%
- Accuracies available: 2%, 3% & 5%
- Choice of multiple temperature ranges
- Options such as override, fanspeed switch and communications jack (Room only)



DEWPOINT

- Precision RH and temperature sensing elements
- 4 user selectable measurement variables (Dewpoint, dry-bulb, wet-bulb and enthalpy)
- 3 output types available (Analog, BACnet®, Modbus)
- Dual analog outputs
- LCD display

FLOW

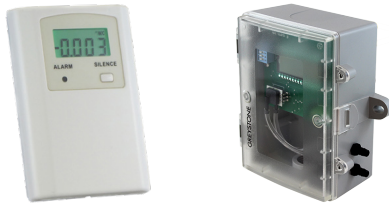


DUCT AIRFLOW TRANSMITTER

- Converts airspeed into a 4–20 mA or a 0–10 Vdc signal
- 3 field selectable ranges
- Temperature output
- Optional alarm relay
- Optional LCD

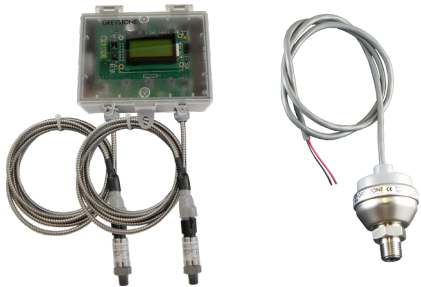


PRESSURE



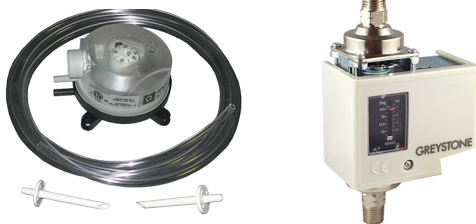
LOW PRESSURE

- Several monitoring configurations
- Ranges 0.125" W.C. to 30" W.C. (30 to 2000 Pa)
- Uni- or bi-directional pressure ranges
- Selectable pressure ranges for each (W.C. & Pa)
- Optional LCD display and relay output
- BACnet® communication option



HIGH PRESSURE

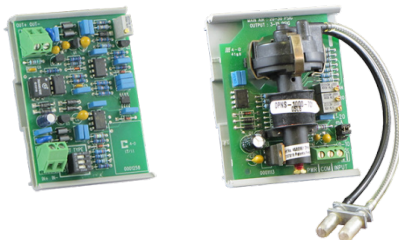
- Gage & differential models
- Stainless steel sensor construction
- Models with selectable pressure ranges
- Remote sensors with various cable lengths
- Large variety of ranges



AIR & LIQUID PRESSURE SWITCHES

- High rated SPDT contacts
- Adjustable setpoint
- Adjustable differential
- Full mechanical switching

SIGNAL INTERFACES

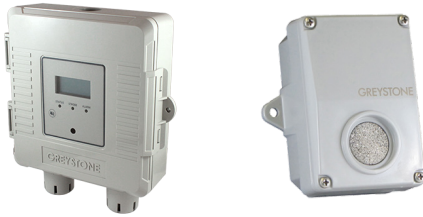


TRANSMITTERS

- Analog to pneumatic
- Analog rescaling
- Analog signal isolation
- Analog to resistance
- Analog to multiple relay



AIR & GAS



CARBON MONOXIDE & NITROGEN DIOXIDE

- Replaceable electrochemical sensing element
- Wall or duct mount models
- Ranges up to 500 PPM (CO)
- Range 10 PPM (NO₂)
- Optional on board relay
- Optional BACnet® or Modbus communication



CARBON DIOXIDE

- Room, duct or outside air models
- 0-10,000 or 20,000 (Dual-channel) PPM CO₂ ranges
- Patented self-calibration algorithm
- Guaranteed 5 year calibration interval
- Menu driven set-up
- Models with temperature & RH
- Optional BACnet® or Modbus communication



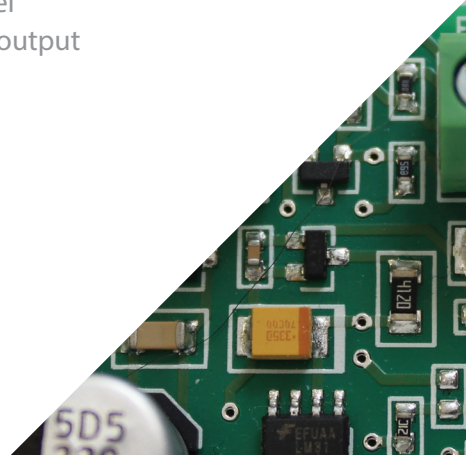
PARTICULATE MATTER

- Detection of environmental dusts and other particles
- Selectable PM₁, 2.5, 4 & 10 Particle Sizes
- LCD displaying PM level
- Tri-color LED to indicate IAQ level
- Analog, BACnet® or Modbus output
- Room, Duct and Outside



VOLATILE ORGANIC COMPOUNDS (VOC)

- Detection of volatile organic compounds (VOC's)
- VOC output based on IAQ Index
- Optional RH or Temperature
- Tri-color LED to indicate IAQ level
- Analog (2), BACnet® or Modbus output
- Optional alarm relay
- Room or Duct models



POWER



SWITCHES

- Solid or split-core
- Auto-ranging eliminates lost jumpers
- Self-powered and no insertion loss
- True digital switching with zero leakage
- Small compact size
- Fixed or field adjustable models
- Input / Output isolation via current transformer



SENSORS

- Solid or split-core
- No field adjustment necessary, factory calibrated
- 0-5 Vdc, 0-10 Vdc or 4-20 mA models
- Average measurement or True RMS
- Input / Output isolation via current transformer
- Small compact size

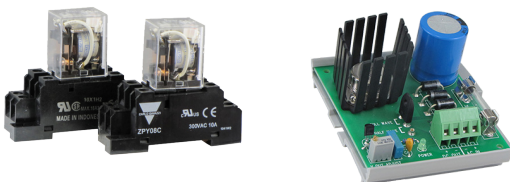
WATER DETECTION



WATER DETECTOR

- Monitors wide variety of liquids
- Spot, remote probe or conductivity cable
- Single or Dual Channel
- 1 or 2 Form C, relay outputs
- Fail-safe circuitry
- Status LED
- Height adjustable, IP65 enclosure

MISCELLANEOUS



VARIOUS PRODUCTS

- Regulated DC power supplies
- General purpose relays
- Damper-end switch
- Light level detector
- Remote LCD display



INTERNATIONAL GREYSTONE



Head Office & Manufacturing

Moncton, New Brunswick, Canada

North America Sales Offices

Toronto, Ontario, Canada

Calgary, Alberta, Canada

Portland, Oregon, US

Raleigh, North Carolina, US

Indianapolis, Indiana, US

International Sales Offices

Bangalore, India

New Delhi, India

Mumbai, India

Dubai, United Arabs Emirates

Peninsula Plaza, Singapore

Kuala Lumpur, Malaysia

Greystone Energy Systems Inc.

150 English Drive, Moncton
New Brunswick, Canada E1E 4G7
Phone : +1-506-853-3057
Fax : +1-506-853-6014
North America: +1-800-561-5611

mail@greystoneenergy.com
www.greystoneenergy.com



RoHS
COMPLIANT



GREYSTONE HAS AN ISO 9001 REGISTERED QUALITY SYSTEM