



# GREYSTONE

ENERGY SYSTEMS INC

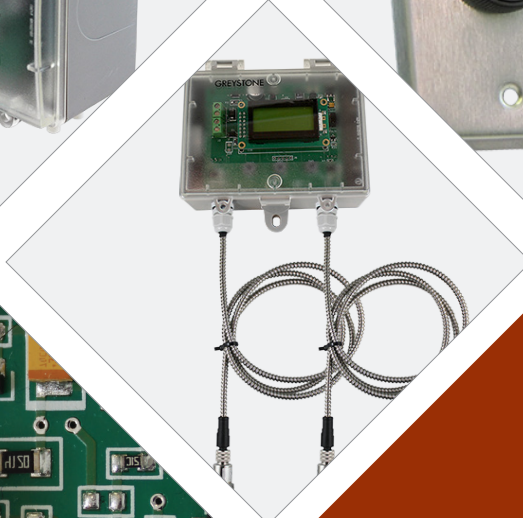
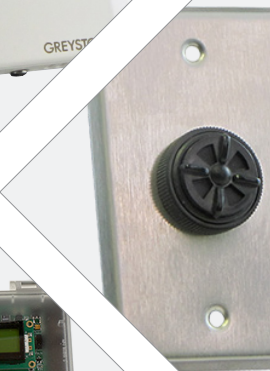
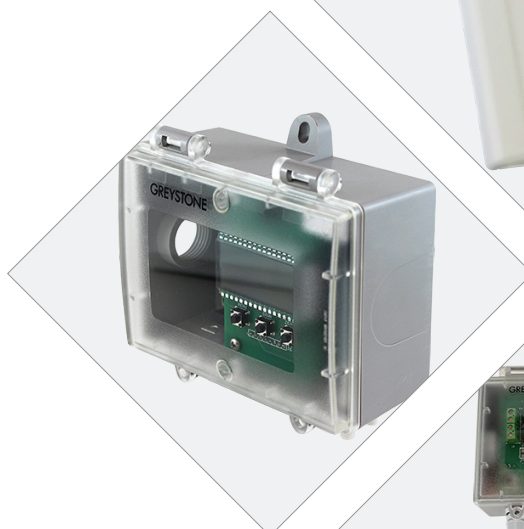
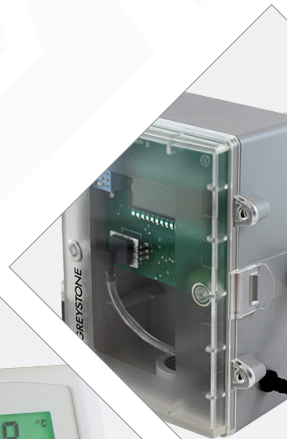
## PRESSURE & FLOW PRODUCT SERIES



A comprehensive selection of pressure measuring products that are designed and manufactured for long-term stability and performance. Each product provides a repeatable and accurate output signal for efficient pressure monitoring and control.

### PRODUCTS

- Room Pressure
- Ultra Low Pressure
- Low Pressure
- Air Flow Switch
- Liquid Gage Pressure
- Liquid Differential Pressure



RoHS  
COMPLIANT



GREYSTONE HAS AN ISO 9001 REGISTERED QUALITY SYSTEM

# PRESSURE & FLOW

## ROOM PRESSURE

RPC Series



### PRODUCT TYPES

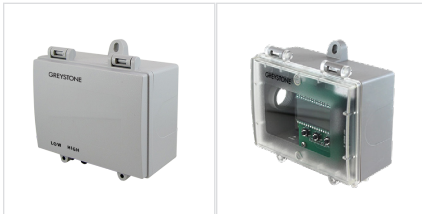
- Room

### FEATURES

- Ranges  $\pm 250$  Pa to  $\pm 30$  Pa ( $\pm 1$ " W.C. to  $\pm 0.125$ " W.C.)
- Field selectable outputs
- Precision silicon sensor
- 24 Vac/dc power supply standard
- Audible alarm with silence button
- LCD display & alarm output
- Optional BACnet® Communications

## ULTRA LOW DRY PRESSURE

EUP, UP Series



### FEATURES

- Ranges 30 to 250 Pa (0.125" W.C. to 1" W.C.)
- Uni- or bi-directional pressure ranges
- Selectable ranges per model
- 24 Vac/dc power supply standard
- LCD display
- Optional alarm relay output
- Weatherproof enclosure with hinged and gasketed cover

## LOW DRY PRESSURE

ELP, LP Series

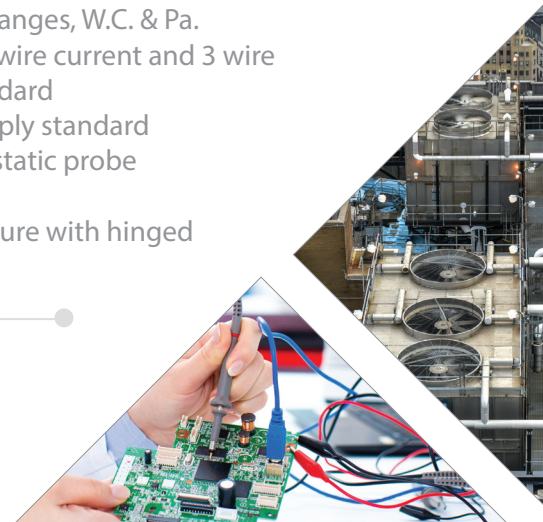


### PRODUCT TYPES

- Surface
- Duct

### FEATURES

- Ranges 250 to 2000 Pa (1" W.C. to 40" W.C.)
- Selectable pressure ranges, W.C. & Pa.
- Jumper selectable 2 wire current and 3 wire voltage outputs standard
- 24 Vac/dc power supply standard
- Optional integrated static probe
- LCD display
- Weatherproof enclosure with hinged and gasketed cover



## GAGE WET PRESSURE

PGS, GP Series



### FEATURES

- Ranges up to 69,000 kPa (10,000 PSI) (PGS)
- Ranges up to 3,000 kPa (500 PSI) (GP)
- Four selectable ranges per model (GP)
- Three selectable outputs (GP)
- Weatherproof enclosure with hinged and gasketed cover (GP)
- FT6 or armoured cable available (GP)
- LCD display (GP)

## DIFFERENTIAL WET PRESSURE

DP-3VB Series



### FEATURES

- Ranges up to 3,000 kPa (500 PSI)
- Four switch selectable ranges per model
- Three selectable outputs
- All stainless steel sensor construction
- FT6 or armoured cable available
- Port swap switch to correct incorrect plumbing
- Selectable uni- or bi-directional
- Weatherproof enclosure with hinged and gasketed cover
- LCD Display
- Optional 3-way valve and bracket

## LIQUID PRESSURE SWITCH

GLPS Series



### FEATURES

- Gage or Differential
- High rated SPDT contacts
- Adjustable setpoint
- Adjustable Differential
- Direct switching of 240 Vac loads
- Full mechanical switching
- Visual indication



# PRESSURE & FLOW

## LIQUID FLOW SWITCH

GLFS Series



### FEATURES

- For pipes up to 203.2mm (8") in diameter
- Working pressure of up to 13.5 Bar (195.8 PSI)
- Liquid temperatures up to 120°C (248°F)
- IP65 enclosure

## AIR FLOW SWITCH

GFS, AFS Series



### FEATURES

- Contains a diaphragm, a snap-acting SPDT switch, range adjustment knob
- Connections accept 6.35mm (0.25") OD tubing
- Enclosure cover guard
- Optional pressure ranges available
- 2 pick up tubes and 2 M (6.56') of PVC tubing

## AIR FLOW TRANSMITTER

AVDT Series



### FEATURES

- Converts airspeed into a 4 – 20mA or a 0 – 10 VDC signal
- Linear output signal
- Made with corrosion resistant material
- Fully electronic registration of airflow speed
- AC or DC voltage supply
- Telescopic sensor facilitates installation
- Temperature output signal 0 – 10 VDC



Phone : +1-506-853-3057  
North America: +1-800-561-5611  
[www.greystoneenergy.com](http://www.greystoneenergy.com)

